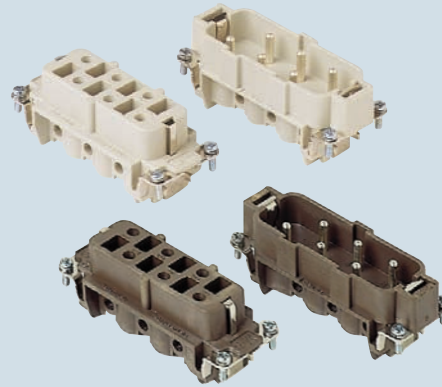


enclosures:
 size "77.27" page:
C-TYPE IP65/IP66 228 - 234
C7 IP67 stainless steel lever 256
V-TYPE IP65/IP66
stainless steel lever 268 - 271
T-TYPE IP65 insulating 284
JEI zinc-plated steel lever 292 - 293
BIG hoods 312 - 315
aggressive environments 331
EMC 350
central lever 364 - 365
IP68 382 - 385
for 180 °C 356
 panel supports: page:
COB 410 - 411

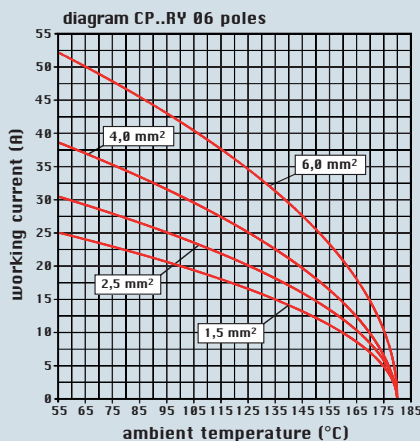
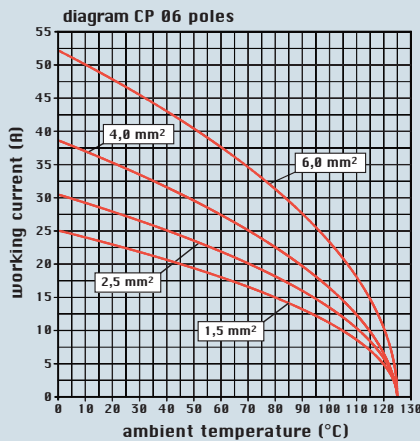
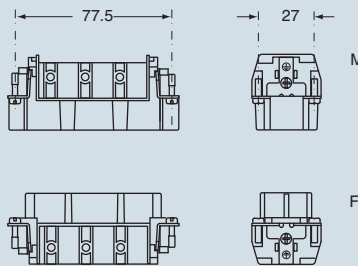
**inserts,
 screw terminal connection**



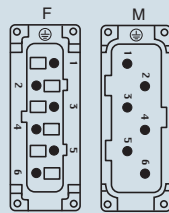
description	part No.
indirect, with plate female inserts with female contacts male inserts with male contacts	CPF 06 CPM 06
indirect, with plate, use in temperatures up to 180 °C female inserts with female contacts, brown male inserts with male contacts, brown	CPF 06 RY CPM 06 RY

- characteristics according to EN 61984:
35A 400/690V 6kV 3
- UL, CSA, CCC, GOST certified
- rated voltage according to UL/CSA: 600V
- insulation resistance: ≥ 10 GΩ
- ambient temperature limit: -40 °C ... +125 °C
 (CP RY version up to 180 °C)
- are made of self-extinguishing thermoplastic resin
 UL 94 V0
- mechanical life: ≥ 500 cycles
- contact resistance: ≤ 0.5 mΩ
- for maximum current load, see the following
 load curves inserts, for more information see
 page 498

dimensions in mm



contacts side (front view)



- inserts with plate, for section conductors:
 1.50 - 6 mm² - AWG 16 - 10
- conductors stripping length: 10.5 mm
- terminal screw torque: 1.2 Nm (10.7 lb.in), for more
 information see page 21 and 22

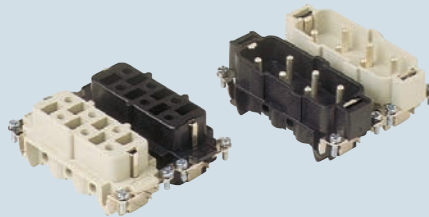
dimensions shown are not binding and may be changed without notice

enclosures:
size "77.62"

page:

C-TYPE IP65/IP66 244 - 247
aggressive environments 333

inserts,
screw terminal connection



description

part No.

part No.

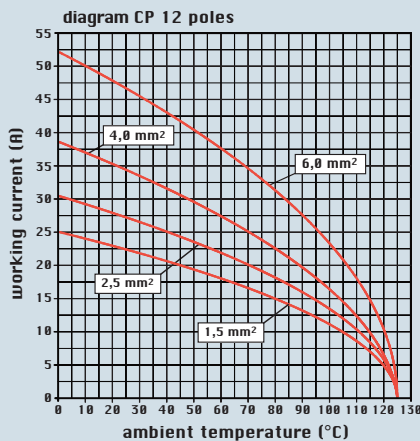
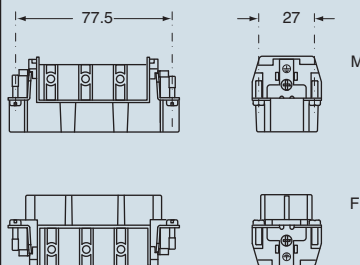
indirect, with plate
female inserts No. (1-6), white and black
male inserts No. (1-6), white and black

CPF 06
CPM 06

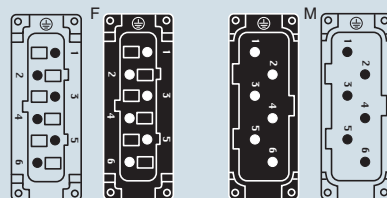
CPF 06 N
CPM 06 N

- characteristics according to EN 61984:
35A 400/690V 6kV 3
- UL, CSA, CCC, GOST certified
- rated voltage according to UL/CSA: 600V
- insulation resistance: $\geq 10 \text{ G}\Omega$
- ambient temperature limit: $-40 \text{ }^\circ\text{C} \dots +125 \text{ }^\circ\text{C}$
- are made of self-extinguishing thermoplastic resin UL 94 V0
- mechanical life: ≥ 500 cycles
- contact resistance: $\leq 0.5 \text{ m}\Omega$
- for maximum current load, see the following load curves inserts, for more information see page 498

dimensions in mm



contacts side (front view)



- inserts with plate, for section conductors:
1.50 - 6 mm² - AWG 16 - 10
- conductors stripping length: 10.5 mm
- terminal screw torque: 1.2 Nm (10.7 lb.in), for more information see page 21 and 22

dimensions shown are not binding
and may be changed without notice