



TABLE OF CONTENTS

A Data Sheet is included for each line item on the purchase order.

Document numbers are listed at the bottom of the Data Sheet.

Any one drawing may apply to more than one item number.

All documents are assembled in alpha/numeric order within each section

- DATA SHEETS
- INSTALLATION DRAWINGS
- MATERIALS OF CONSTRUCTION

NRION
Georgi Rangelov
USA

QUOTE NUMBER 41729
REV

PROJ.

Fact. ITEM	Cust. ITEM	QTY	DESCRIPTION
1		1	PEC.4.F1.CI.NBR.NBR*NT
Style	PEC		DeZURIK Eccentric Plug Valve, Rectangular Port
Size	4		4 Inch (100mm); (Standard Port), Stainless Steel Bearings, Welded-In Nickel Seat (Except Rubber Lined or Stainless Steel Bodies)
End Connection	F1		Flanged, Drilled to ANSI Class 125/150
Body Material	CI		Cast Iron, ASTM A126, Class B; (.5"-12" Pressure Rating 175 psi (1210 kPa); (14"& larger Pressure Rating 150 psi (1030 kPa)
Packing	NBR		.5" - 3" Acrylonitrile-Butadiene Reinforced filler in a PTFE U-ring; 4" & Larger Acrylonitrile-Butadiene Reinforced Multiple V-Ring with External Adjustment, -20 to 250° F. (-29 to 121° C.)
Plug Facing	NBR		Acrylonitrile-Butadiene; -20 to 180° F (-29 to 83°C)
Coating or Paint	4G0		3 mils minimum (non-stainless steel parts) of Blue DeZURIK Enamel (NSF Std. 61) on Exterior and Standard (SP10) surface prep
Actuator Type	NT		2 Inch Square Nut

RELATED DOCUMENTS

A050941	DWG INST PEC F GR1 NT 4-8"
A020730	DWG VALVE ASSY PEC F 3.5-20"
A022557	DWG ACT NT 4-8"

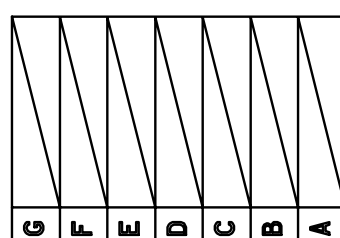
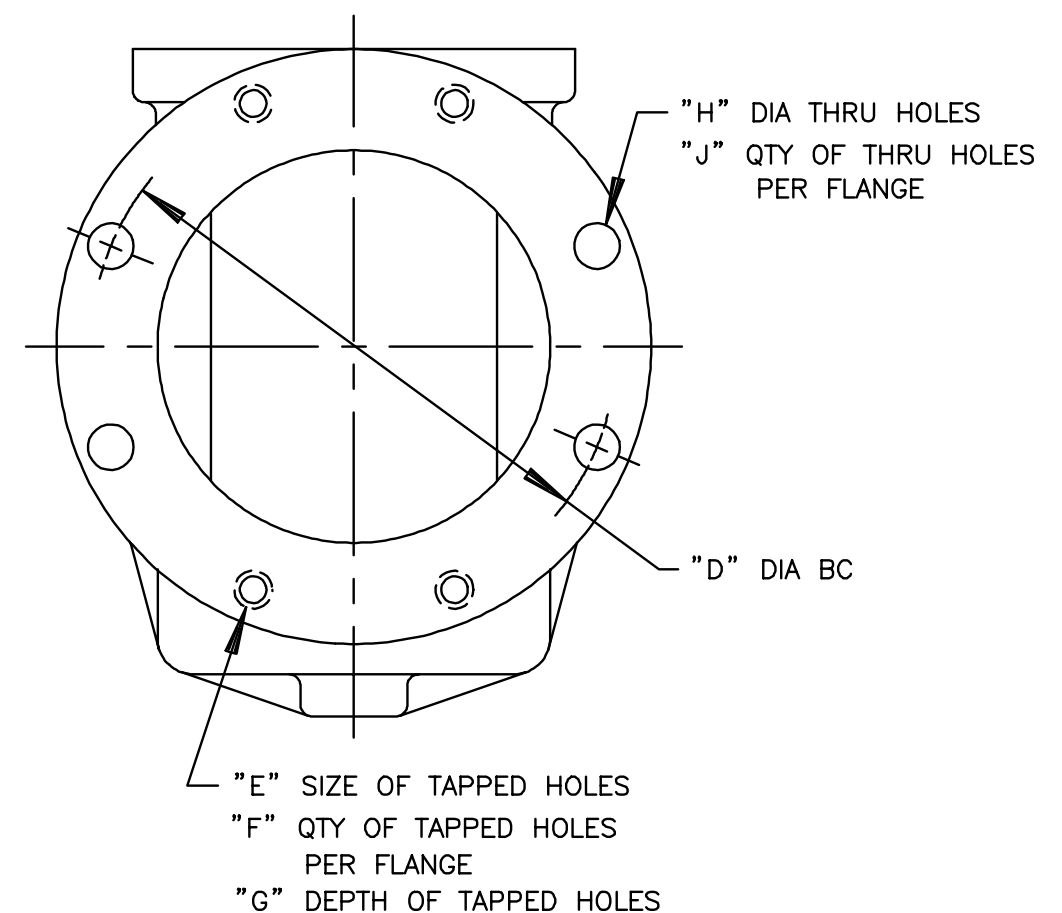
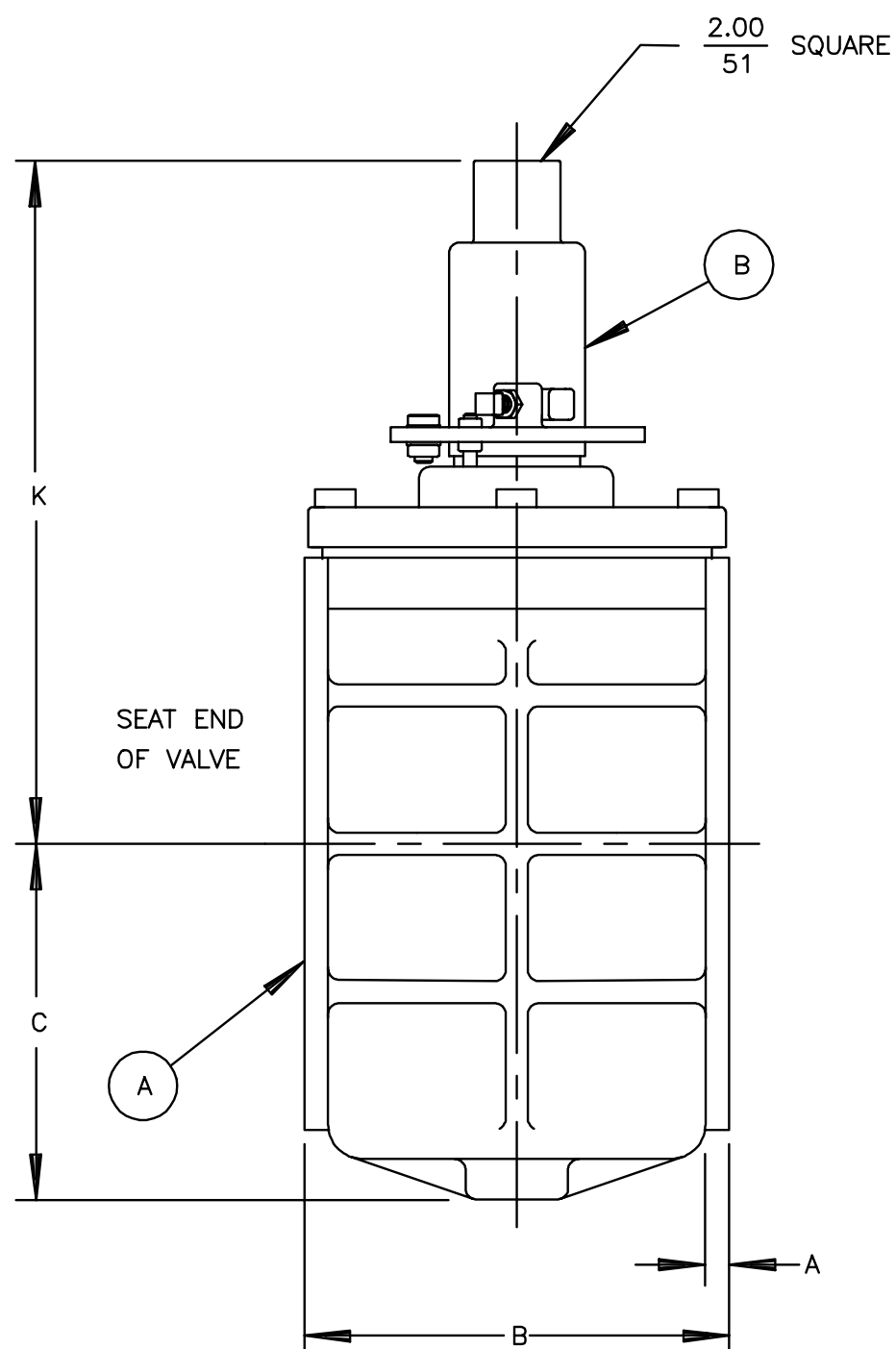
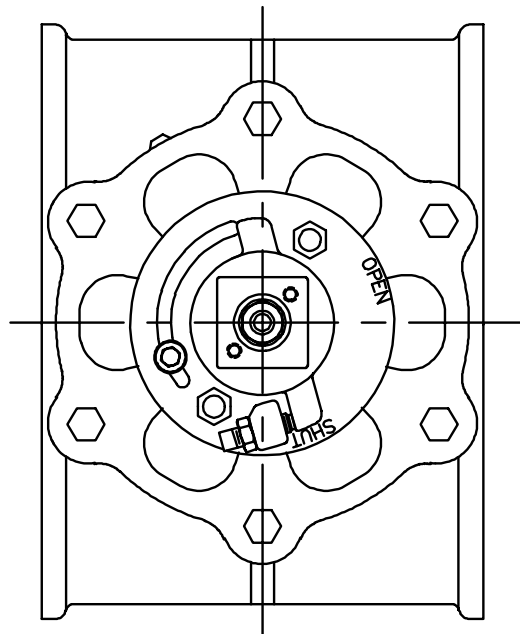
VALVE SIZE		DIMENSIONS <small>INCHES MILLIMETERS</small>									
INCH	MM	A	B	C	D	E	F	G	H	J	K
4	100	$\frac{.69}{18}$	$\frac{9.00}{229}$	$\frac{5.38}{137}$	$\frac{7.50}{191}$	NONE	NONE	NONE	$\frac{.75}{19}$	8	$\frac{10.19}{259}$
5	125	$\frac{.75}{19}$	$\frac{10.50}{267}$	$\frac{6.50}{165}$	$\frac{8.50}{216}$	3/4-10UNC	4	$\frac{1.00}{25}$	$\frac{.88}{22}$	4	$\frac{13.81}{351}$
6	150	$\frac{.75}{19}$	$\frac{10.50}{267}$	$\frac{6.50}{165}$	$\frac{9.50}{241}$	NONE	NONE	NONE	$\frac{.88}{22}$	8	$\frac{13.81}{351}$
8	200	$\frac{.81}{21}$	$\frac{11.50}{292}$	$\frac{8.25}{210}$	$\frac{11.75}{298}$	3/4-10UNC	4	$\frac{.81}{21}$	$\frac{.88}{22}$	4	$\frac{15.38}{391}$

A	VALVE
B	ACTUATOR

NOTES:

1. FLANGES ARE FLAT FACED WITH DIAMETER AND DRILLING TO CLASS 125 ANSI STANDARD B16.1, EXCEPT FOR TAPPED HOLES AS INDICATED. SEE A-16368 FOR NON-ANSI FLANGE DATA.

NOTICE
THIS DRAWING DOES NOT SHOW ACTUATOR ACCESSORIES. IF ACCESSORIES ARE REQUIRED, REFER TO THE APPROPRIATE ACCESSORY INSTALLATION DRAWING FOR DIMENSIONS AND OTHER RELATED INFORMATION.

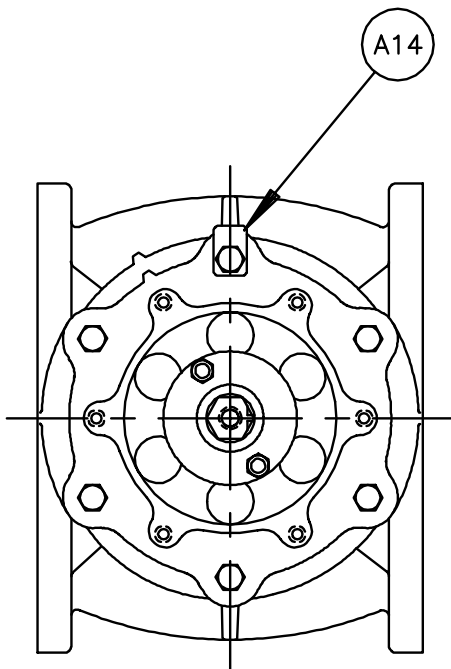


DeZURIK
Sartell, MN USA 56377
www.dezurik.com

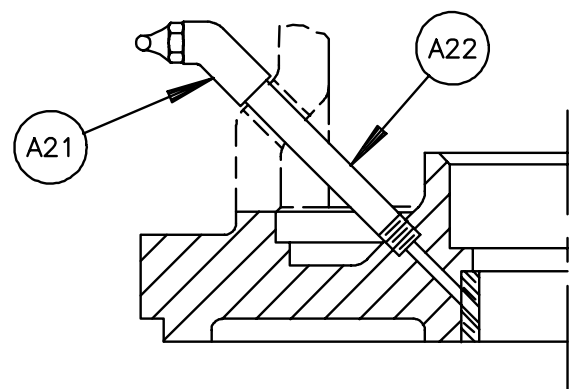
PEC ECCENTRIC VALVES SIZE 4 - 8 FLANGED MATERIAL GROUP 1
NT NUT ACTUATED

DOCT. CODE	DRAWN	BMP	APPROVED	TPK
C1	CHECKED	TPK	DATE	02/08/99

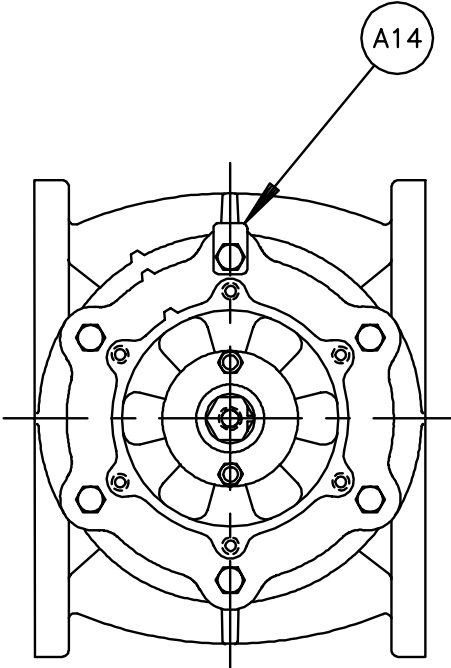
A50941



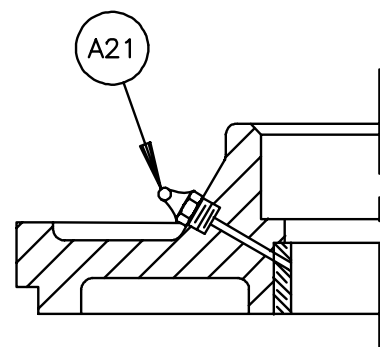
6.5 & 8 VALVES



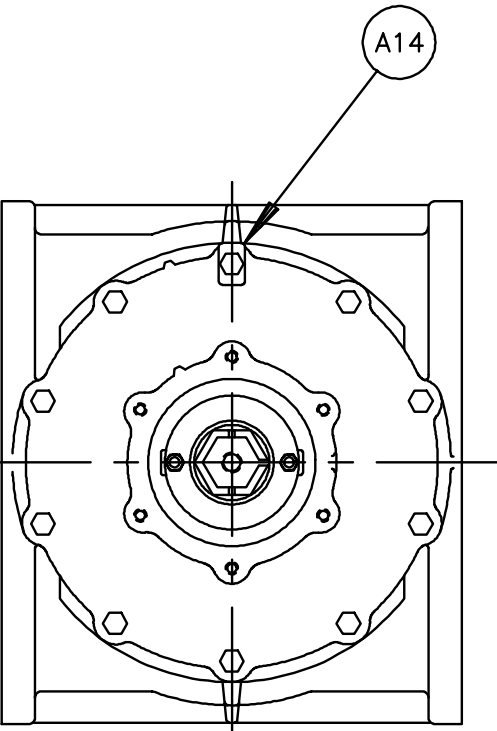
GREASE FITTING IN BONNET,
ALL ACTUATORS EXCEPT LV & NT



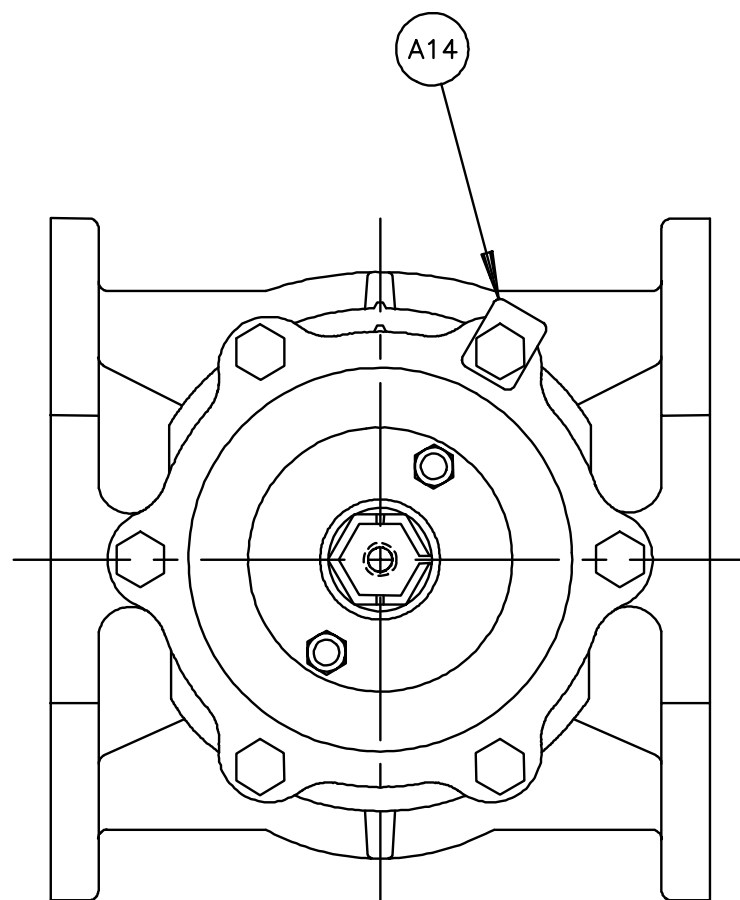
10.5 - 18 VALVES



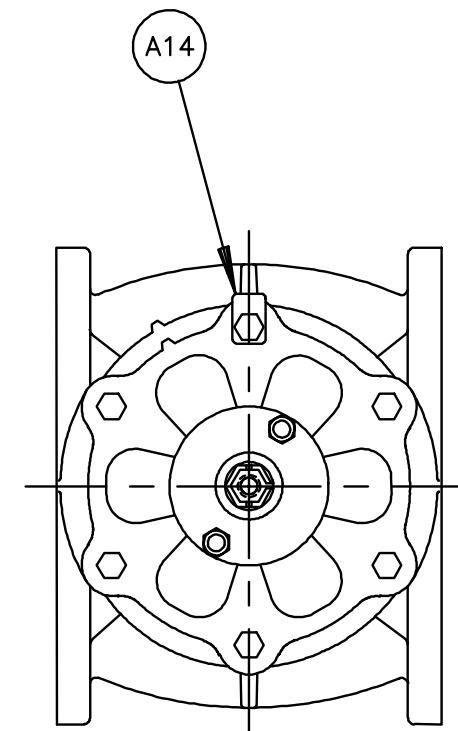
GREASE FITTING IN BONNET,
LV & NT ACTUATORS



18.5 & 20 VALVES



3.5 - 6 VALVES
(SEE NOTE 4)

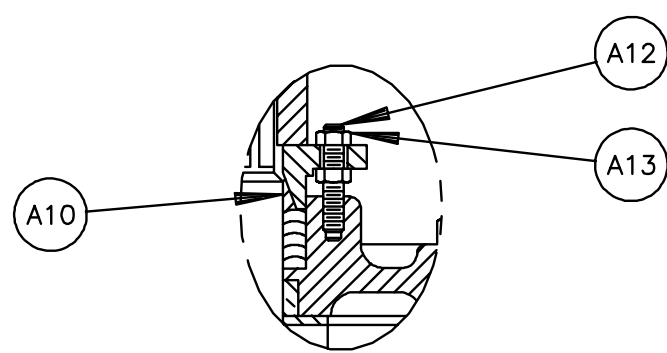


8.5 - 10 VALVES
(SEE NOTE 4)

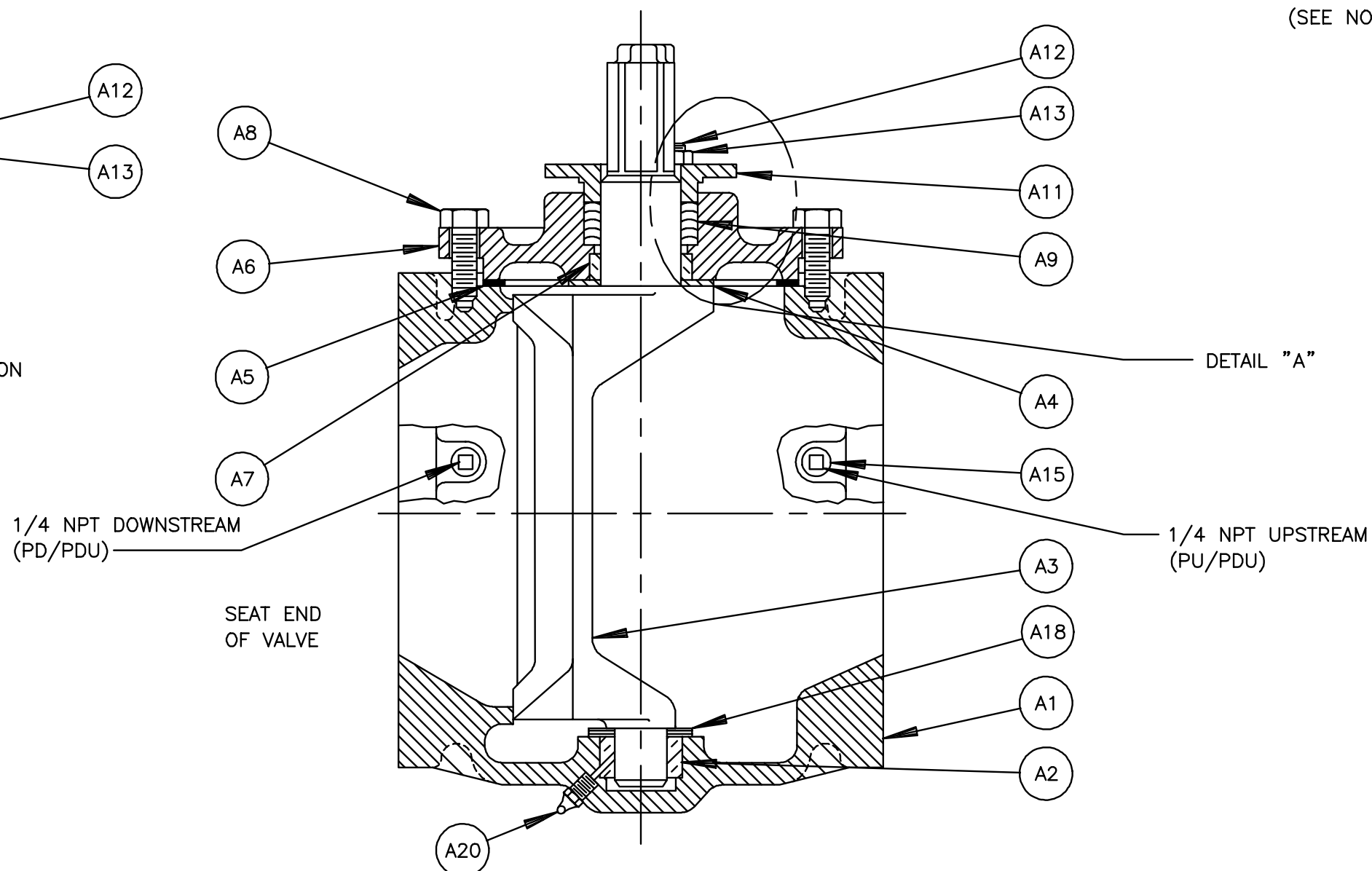
NOTE:

1. RECOMMENDED SPARE PARTS ARE ITEMS NUMBER A3, PLUG(IF RUBBER FACED), A4, A5 AND A9.
2. WHEN ORDERING PARTS, INCLUDE VALVE SIZE AND PART NUMBER FROM DATA PLATE. ALSO INCLUDE THIS DRAWING NUMBER WITH PART NAME, NUMBER AND QUANTITY.
3. CLOCKWISE ROTATION OF PLUG STEM CLOSSES VALVE.
4. ON THE SIZE 3.5, 4, 4.5, 5, 6, 8.5, & 10 VALVES BONNET SCREWS ARE USED FOR MOUNTING ACTUATOR.
5. VALVE MAY BE FURNISHED WITH EITHER THE UPPER JOURNAL GREASE FITTING, THE LOWER JOURNAL GREASE FITTING OR BOTH.

NO	PART NAME	QTY
A1	BODY	1
A2	BEARING (3.5 - 8 VALVES)	1
A2	BEARING (8.5 - 18 VALVES)	2
A2	BEARING (18.5 & 20 VALVES)	1
A3	PLUG	1
A4	THRUST WASHER (GRIT EXCLUDER WITH GE OPTION)	1
A5	GASKET (BODY)	1
A6	BONNET	1
A7	BEARING	1
A8	SCREW (3.5 - 18 VALVES)	6
A8	SCREW (18.5 & 20 VALVES)	10
A9	PACKING	-
A10	CONE, 3.5 - 8 NT (EXCEPT LOW FRICTION CAT. CHAR. NBRL & SQ. PACKING)	1
A11	GLAND	1
A12	STUD (3.5 - 20 GS--HD_ & GS--CW_)	2
A12	STUD (3.5 - 20 GS--C-)	2
A12	STUD (8.5 - 12 MNA)	NOT REQ'D
A12	STUD (8.5 - 12 LV)	NOT REQ'D
A12	STUD (3.5 - 20 GS--ML_)	2
A12	STUD (3.5 - 8 NT)	2
A12		
A12		
A13	NUT (3.5 - 20 GS--HD_ & GS--CW_)	2
A13	NUT (3.5 - 20 GS--C-)	2
A13	NUT (8.5 - 12 MNA)	NOT REQ'D
A13	NUT (8.5 - 12 LV)	NOT REQ'D
A13	NUT (3.5 - 12 GS--ML_)	2
A13	NUT (3.5 - 8 NT)	4
A13		
A13		
A14	CAUTION TAG	1
A15	PIPE PLUG (PU, PD OR PDU)	-
A18	GRIT EXCLUDER (OPTION GE ONLY)	-
A20	GREASE FITTING (OPTION GR ONLY)	1
A21	GREASE FITTING (OPTION GR ONLY)	1
A22	NIPPLE (EXCEPT LV & NT) (OPTION GR ONLY)	1



DETAIL "A"
3.5 - 8 NT CONSTRUCTION



R	62259	04/30/12
Q	62047	07/26/11
P	61845	11/16/09
N	61612	06/10/08
M	61602	04/02/08
L	61371	11/22/05
K	60295	10/19/00
J	54653	03/30/99
H	54620	02/11/99
G	53766	09/03/96
F	50312	03/22/93
E	50312	03/03/93
D	51112	03/05/91
C	16317	8/2/85
B	15276	11/22/82
A	14670	08/28/81

DeZURIK
Sartell, MN USA 56377
www.dezurik.com

PEC ECCENTRIC VALVE ASSEMBLY 3.5 - 20, FLANGED, EXCEPT BODY MATERIAL CIS, DIS & CIH		
DOCT. CODE C1	DRAWN DENNY CHECKED TNB	APPROVED RJP DATE 10-13-83
		A20730



MATERIALS OF CONSTRUCTION

DRAWING(S): A20730

DESCRIPTION: PEC,4,F1,CI,NBR,NBR*NT

Item	Material
A01	IRON, ASTM A126, CLASS B
A02	STAINLESS STEEL, TYPE 316L, SINTERED
A03	ACRYLONITRILE-BUTADIENE (NBR)
A03	IRON, ASTM A126, CLASS B
A04	PTFE, TYPE II, ASTM D3294 OR D3308, GRADE 1
A05	GASKET, NON-ASBESTOS COMPRESSED SHEET GASKET MATERIAL
A06	IRON, ASTM A126, CLASS B
A07	STAINLESS STEEL, TYPE 316L, SINTERED
A08	CARBON STEEL, ZINC PLATED
A09	ACRYLONITRILE-BUTADIENE (NBR)
A10	RYTON, MINERAL FILLED, INJECTION MOLDING PELLETS
A11	IRON, ASTM A126, CLASS B
A12	CARBON STEEL, ZINC PLATED
A13	CARBON STEEL, ZINC PLATED
A14	STAINLESS STEEL, TYPE 302